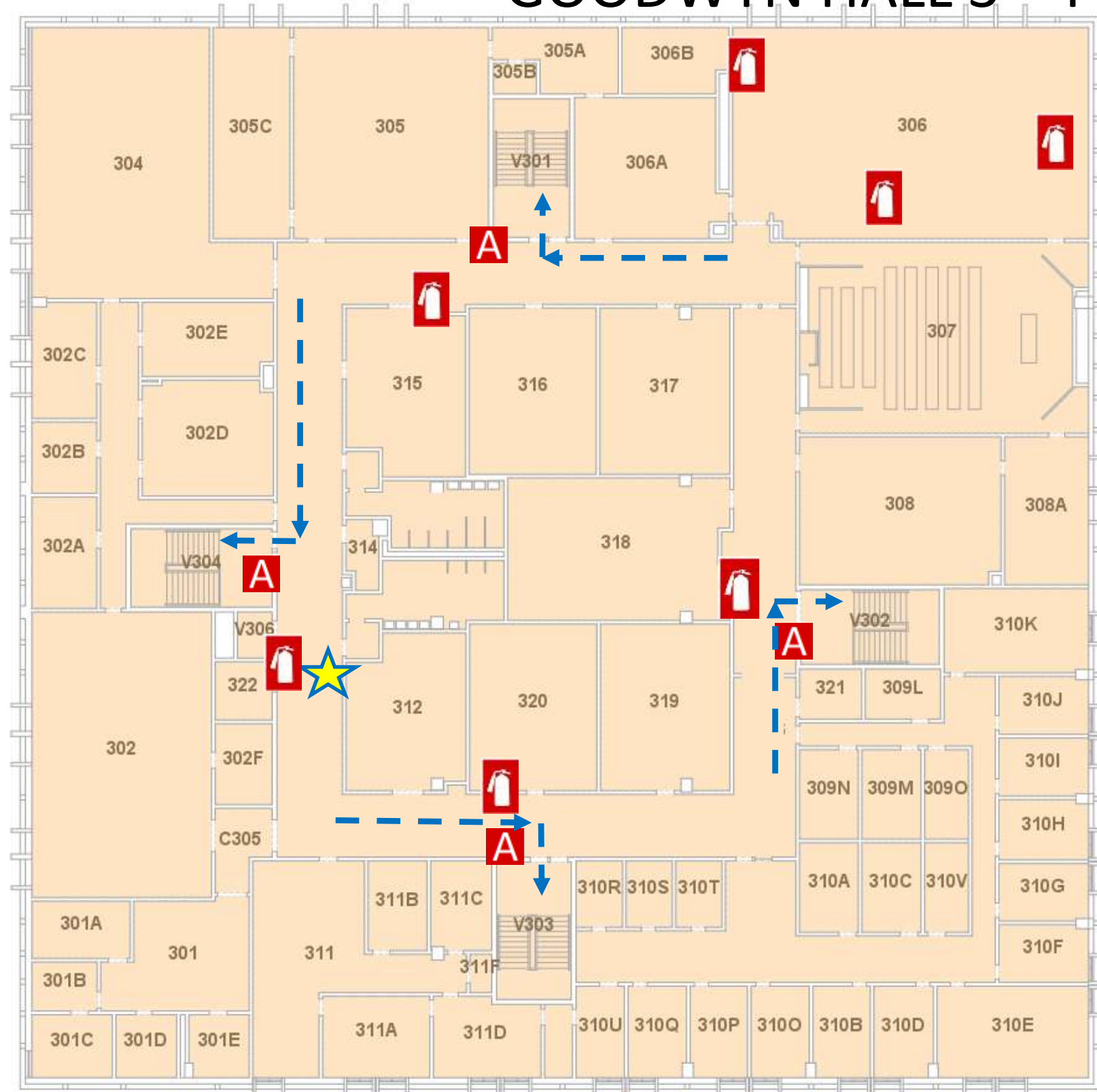





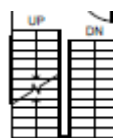


# EMERGENCY PLAN

## GOODWYN HALL 3<sup>RD</sup> FLOOR



OFFICE OF  
PUBLIC SAFETY



-  YOU ARE HERE
-  FIRE EXTINGUISHER
-  FIRE ALARM PULL STATION
-  STAIRS
-  EXIT ROUTE
-  SEVERE WEATHER SHELTER AREAS

- 
  - 1<sup>st</sup> FLOOR, ROOM 109
  - 1<sup>st</sup> FLOOR, ROOM 110
  - 1<sup>st</sup> FLOOR, ROOM 111
  - 1<sup>st</sup> FLOOR, ROOM 112
  - 1<sup>st</sup> FLOOR, ROOM 113
  - 1<sup>st</sup> FLOOR, ROOM 116
  - Basement, Hallways

**IN CASE OF FIRE USE STAIRWAY TO EXIT- DO NOT USE ELEVATOR**

**AUM ALERT** Join at [www.aum.edu](http://www.aum.edu) to receive campus emergency notifications

**CAMPUS POLICE**  
**334-244-3424**

 **EMERGENCY EVACUATION CHAIR LOCATED ON 3<sup>RD</sup> FLOOR**

