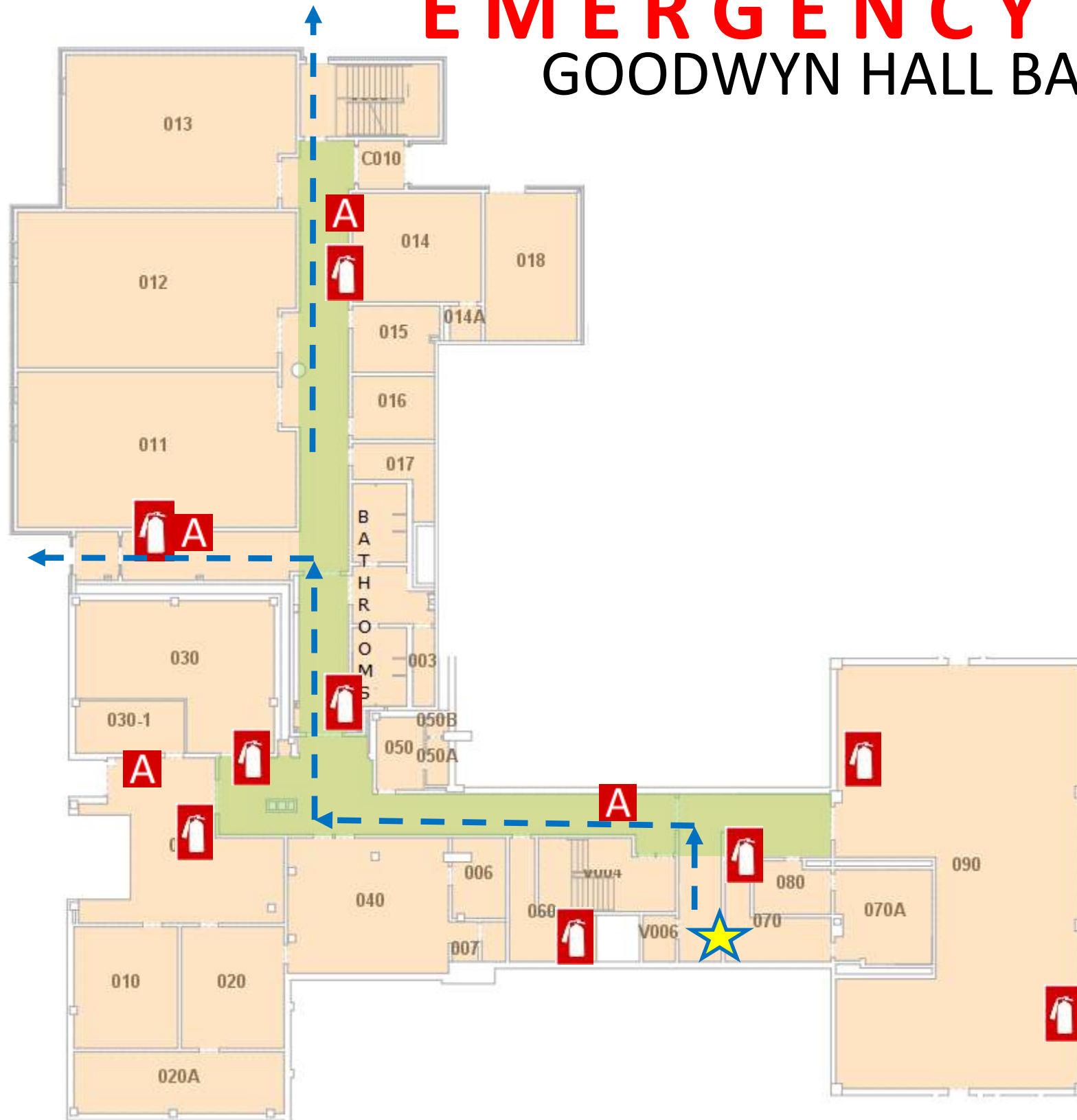


EMERGENCY PLAN

GOODWYN HALL BASEMENT



OFFICE OF
PUBLIC SAFETY



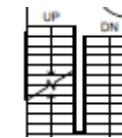
YOU ARE HERE



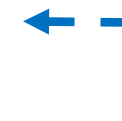
FIRE EXTINGUISHER



FIRE ALARM PULL STATION



STAIRS



EXIT ROUTE



SEVERE WEATHER SHELTER AREAS



1st FLOOR, ROOM 109
1st FLOOR, ROOM 110
1st FLOOR, ROOM 111
1st FLOOR, ROOM 112
1st FLOOR, ROOM 113
1st FLOOR, ROOM 116
Basement, Hallways

IN CASE OF FIRE USE STAIRWAY TO EXIT- DO NOT USE ELEVATOR



Join at www.aum.edu to receive campus emergency notifications

CAMPUS POLICE
334-244-3424



EMERGENCY EVACUATION CHAIR LOCATED ON 3RD FLOOR